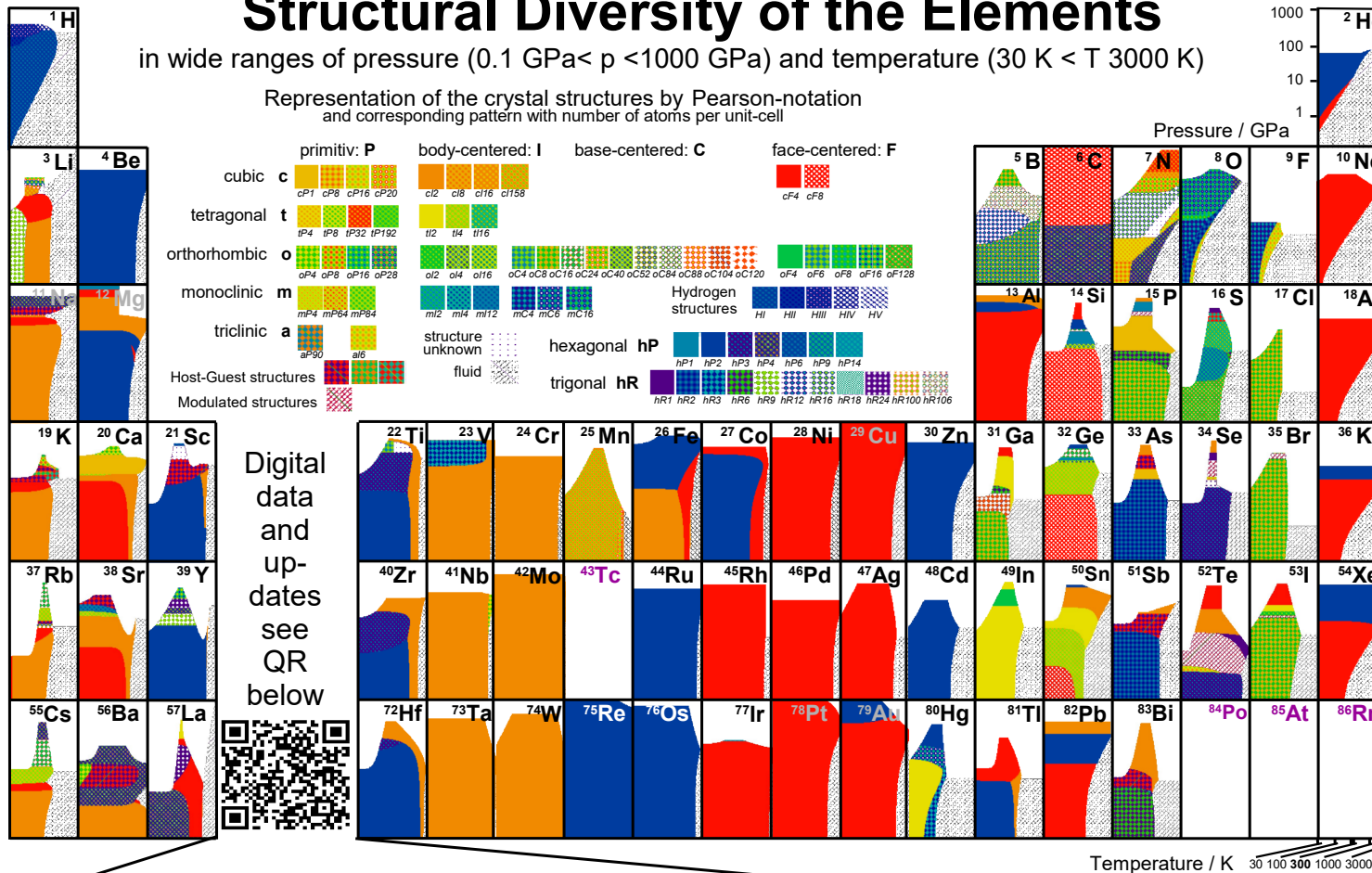


Structural Diversity of the Elements

in wide ranges of pressure (0.1 GPa < p < 1000 GPa) and temperature (30 K < T < 3000 K)

Representation of the crystal structures by Pearson-notation and corresponding pattern with number of atoms per unit-cell



Digital data and updates see QR below



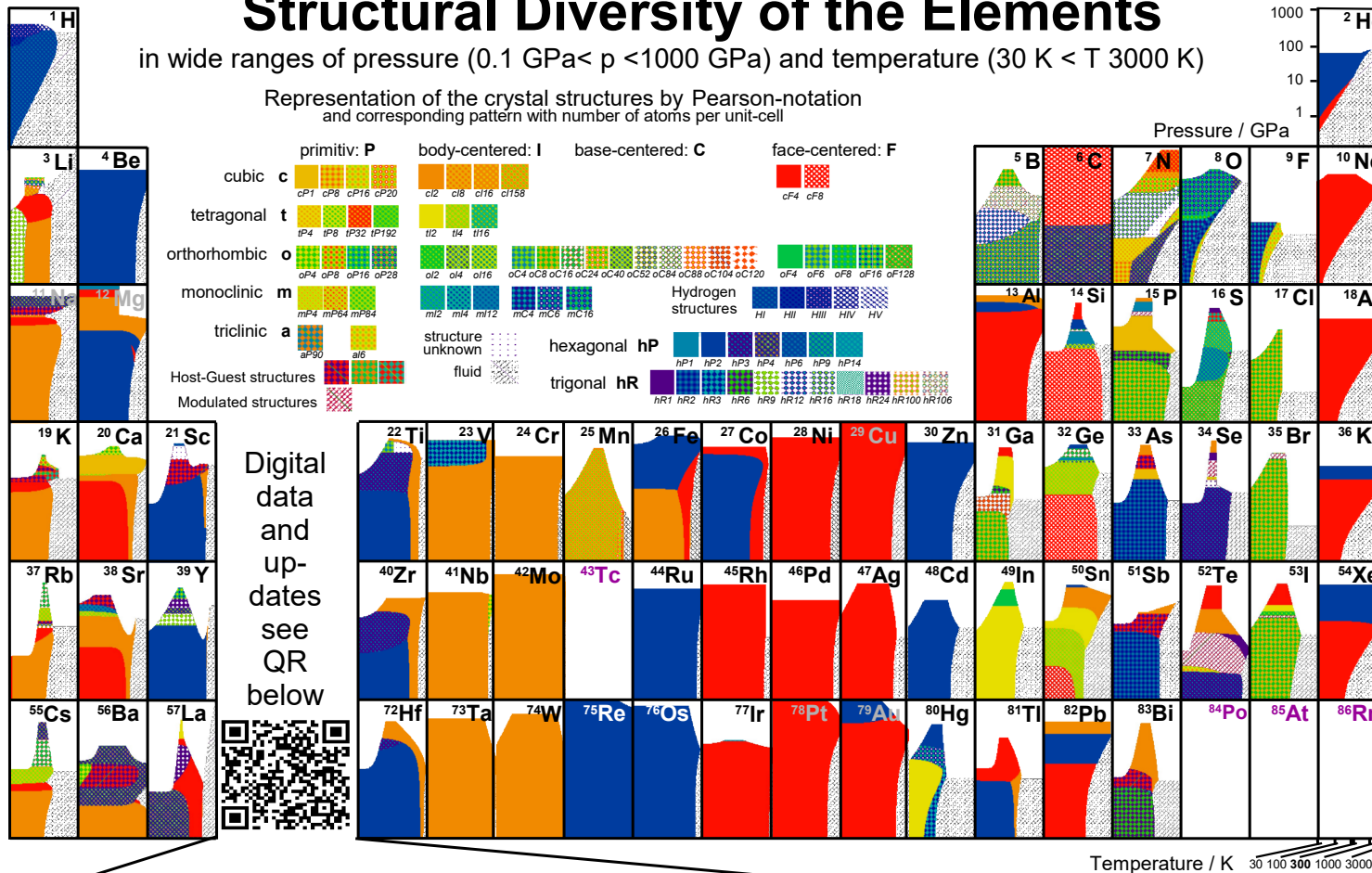
More information and references:
Structure of the Elements - Crystallography and Art
 W. B. Holzapfel, *Acta Cryst B70*, 429-435 (2014)
Moderne Alchemie und der Stein der Weisen (2014)
Modern Alchemy and the Philosopher's Stone (2016)
publi.com/autoren/wilfried-b-holzapfel-8212
simon.ayrinhac.free.fr/Publis/Poster_phase_diagrams
 Earlier material ----->
 Send new data to: Holzapfel@physik.upb.de



Structural Diversity of the Elements

in wide ranges of pressure (0.1 GPa < p < 1000 GPa) and temperature (30 K < T < 3000 K)

Representation of the crystal structures by Pearson-notation and corresponding pattern with number of atoms per unit-cell



Digital data and updates see QR below



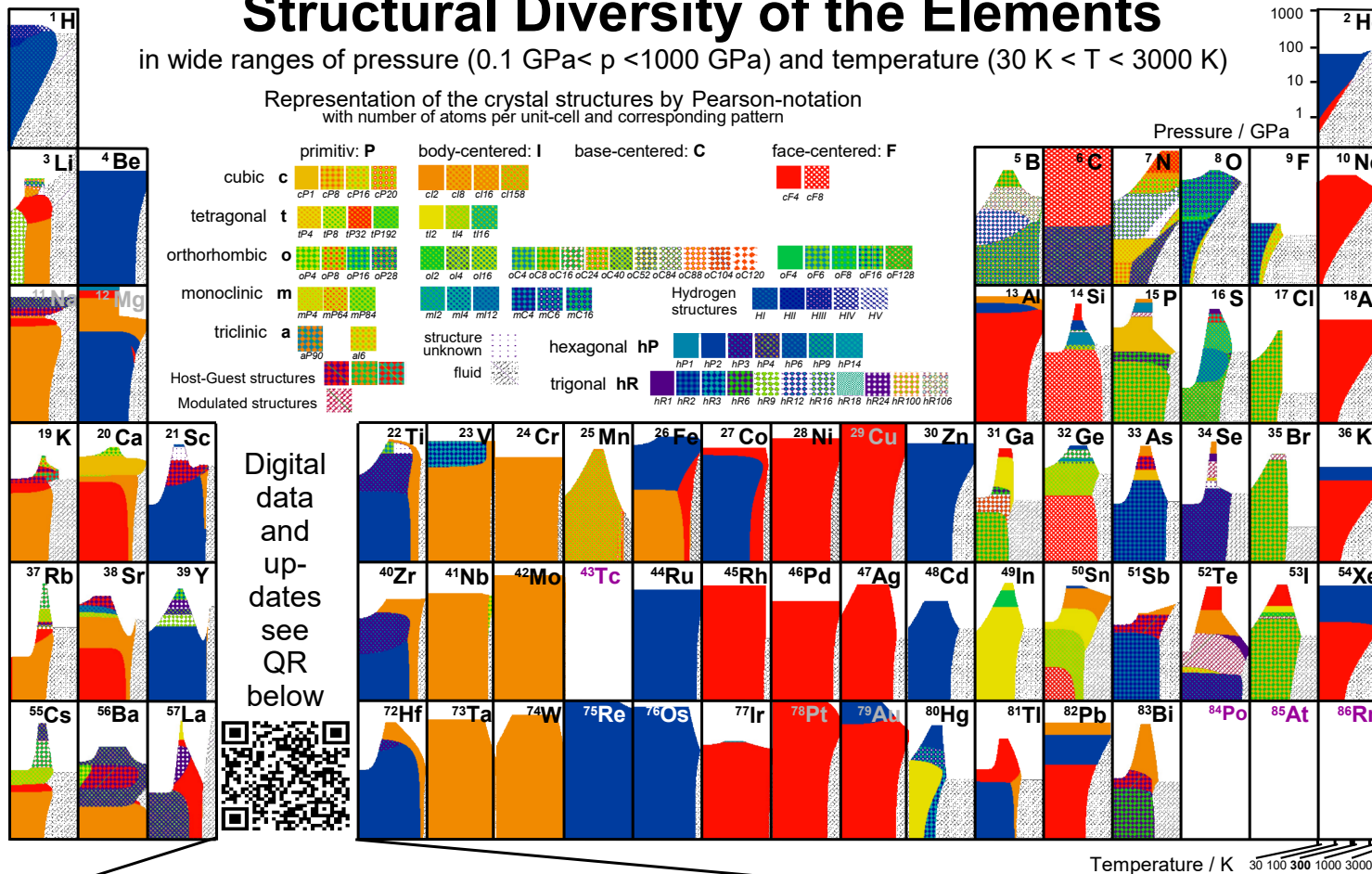
More information and references:
 Structure of the Elements - Crystallography and Art
 W. B. Holzapfel, Acta Cryst B70, 429-435 (2014)
 Moderne Alchemie und der Stein der Weisen (2014)
 Modern Alchemy and the Philosopher's Stone (2016)
publi.com/autoren/wilfried-b-holzapfel-8212
simon.ayrinhac.free.fr/Publis/Poster_phase_diagrams
 Earlier material ----->
 Send new data to: Holzapfel@physik.upb.de



Structural Diversity of the Elements

in wide ranges of pressure (0.1 GPa < p < 1000 GPa) and temperature (30 K < T < 3000 K)

Representation of the crystal structures by Pearson-notation with number of atoms per unit-cell and corresponding pattern



Digital data and updates see QR below



More information and references:
 Structure of the Elements - Crystallography and Art
 W. B. Holzapfel, Acta Cryst B70, 429-435 (2014)
 Moderne Alchemie und der Stein der Weisen (2014)
 Modern Alchemy and the Philosopher's Stone (2016)
publi.com/autoren/wilfried-b-holzapfel-8212
simon.ayrinhac.free.fr/Publis/Poster_phase_diagrams
 Earlier material ----->
 Send new data to: Holzapfel@physik.upb.de

